

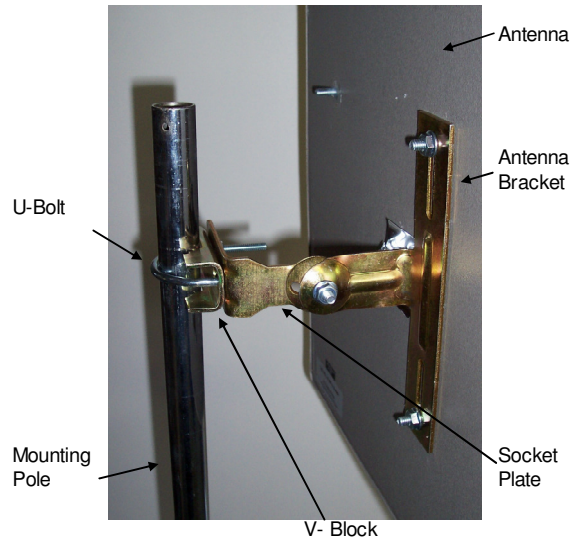
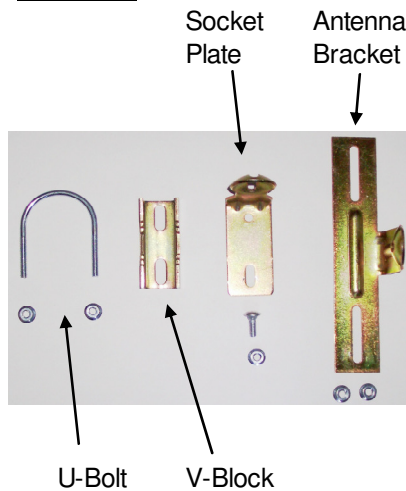


Installation Instructions P130 Patch Antenna

Publication 070412

When correctly installed and operated the P130 antenna will give you many years of trouble-free service.

Contents

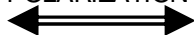


Installation

Step 1.

Determine appropriate polarisation - either vertical or horizontal.

For vertical polarisation, **POLARIZATION** sticker should be vertical when mounted.



Step 2.

Attach the **antenna bracket** with the arm with the socket on the inside of the antenna.
Attach nuts and tighten.

Step 3

Attach **socket plate** to the **antenna bracket** using supplied bolt.
Ensure the head of the bolt is on the inside of the **socket plate** and nut on the outside of the **antenna bracket** as shown.
Loosely tighten to allow adjustment.

Step 4

Attach U-bolt and V-bolt to the **socket plate** and bolt to mast.

Step 5

Adjust azimuth and elevation for best signal. Tighten all nuts.