



Installation Instructions GA5433 5.4GHz 33dBi Grid Antenna

Publication 070807

Polarisation

- The antenna can be installed either vertically or horizontally polarized.
- This is achieved by changing the position of Top Support Bar and Elevation Arm on the back of the reflector (do not change orientation of the Feed in the Grid).
- For Vertical Polarisation, attach the Top Support Bar to through the holes labeled V-Mount
- In Horizontal Polarisation, attach the Top Support Bar through the holes labeled H-Mount.

Assembly of Antenna

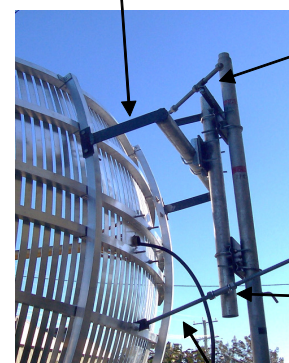
1. Attach the Feed Support Tube Assembly using the 4 x 6mm bolts, nuts & washers. It should be attached so that the VERT arrow is parallel with the grid elements. When mounted on the mast the VERT arrow should point up for vertical polarization or the HOR arrow should point up for horizontal polarization.
2. Tighten 3mm grub screw on grid ring on front of reflector to lock Feed Assembly in place (do not adjust grub screw on feed stalk – this has been factory-set for correct focal length)
3. Attach the Top Support Bar to the back of the Reflector using the four bolts, nuts & washers provided. Tighten the nuts securely.
4. Attach Mount to the mast so that the antenna is facing in the general direction required using the two V-blocks and U-bolts and tighten securely.
5. Adjust the antenna for best signal using the azimuth & elevation nuts.
6. Once best signal is achieved, securely tighten all nuts.

Reflector



Feed Assembly

Top Support Bar



Azimuth Adjustment

Elevation Adjustment

Elevation Arm

Pacific Satellite Pty Ltd
12 George Road, PO Box 100
Salamander Bay, NSW 2317
AUSTRALIA

antennas that go the distance



National Sales: 1800 001 081
Phone: 61 2 4982 0855
Fax: 61 2 4982 0566
www.pacsat.com.au
sales@pacsat.com.au