



S5424 5.4GHz 24dBi Solid Parabolic Antenna

Datasheet: 071505

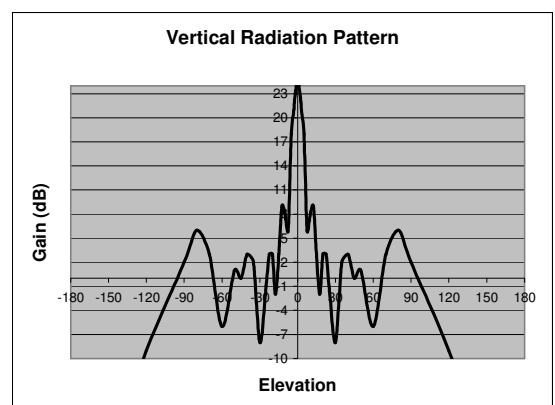
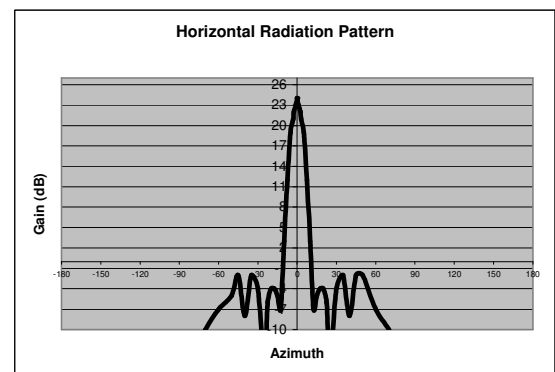
Main Features:

- Excellent front-to-back ratio and narrow beam-width to reduce interference
- Simple to install and aim
- Corrosion resistant spun aluminium alloy reflector
- Durable vented, solid brass feed
- Supplied with stainless steel and aluminium mounting hardware.
- Designed & manufactured in Australia



Electrical Specifications:

Frequency	5470 - 5875MHz
Minimum gain	24dBi, 5.8GHz 23dBi, 5.4GHz
Vertical beam-width	9°
Horizontal beam-width	9°
Front-to-back ratio	-40dB
Impedance	50 Ohms
Maximum power	10 Watts
Polarization	Vertical or horizontal



Mechanical Specifications:

Standard connector	N-Female
Reflector aperture	420mm diameter
Elevation range	40°
Azimuth range	360°
Mass	1.8kg
Mast diameter	30mm - 60mm
Operating temperature	-20°C to 70°C
Standards compliance	AS1471 & MIL-C81706
Wind load at 200kmph	49kg
Wind survival speed	200kmph Survival wind speed
speed	200kmph

Pacific Satellite Pty Ltd
12 George Rd
Salamander Bay, NSW 231
AUSTRALIA

antennas that go the distance

Phone: +61 2 4982 0855

Fax: +61 2 4982 0566

www.pacsat.com.au

E-mail: sales@pacsat.com.au