

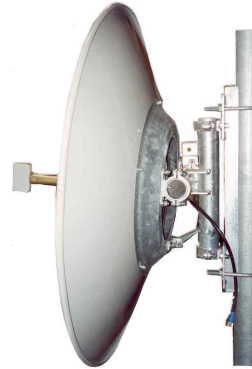


S1213 2.4GHz 28dBi Solid Antenna

Data Sheet 260401

Main Features

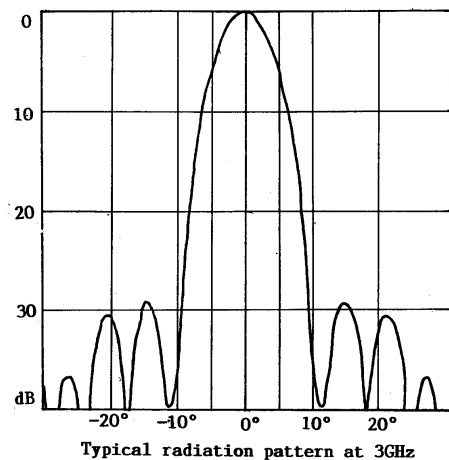
- Professional, high gain antenna for long haul point-to-point operation
- Precision parabolic reflector
- 2mm thick, one piece, spun aluminium reflector supported by a heavy duty galvanized steel ring
- Foam-filled feed with stays to secure aim and mechanical integrity
- Heavy duty, hot dip galvanized, tower mount adjustable in elevation and azimuth
- Designed & manufactured in Australia



Electrical Specifications

Frequency	2400-2500MHz
Minimum Gain	28dBi
Vertical Beam-width	6°
Horizontal Beam-width	6°
Front to back ratio	50dB
Impedance	50 Ohms
Power	50 Watts
Polarisation	Any orthogonal
VSWR	<1.5
Return loss	18dB ±3dB

Typical Radiation Pattern



Mechanical Specifications

Standard Connector	N-Male
Reflector Diameter	1150mm
Elevation range	±15°
Azimuth range	360° ± 30°
Antenna weight	18kg
Mounting weight	14kg
Mast diameter	75mm - 115mm
Temperature range	-30°C to 70°C
Survival Wind speed	200kmph (Std) 250kmph (Option)
Wind load at 200kmph	250Kg

Pacific Satellite Pty Ltd
12 George Road, PO Box 100
Salamander Bay, NSW 2317
AUSTRALIA

antennas that go the distance



National Sales: 1800 001 081
Phone: 61 2 4982 0855
Fax: 61 2 4982 0566
www.pacsat.com.au
sales@pacsat.com.au